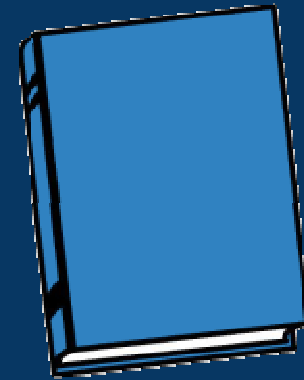
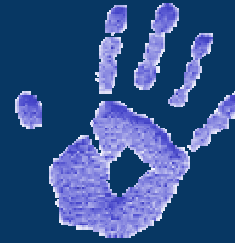


JISC



# Identifying Web Resource Preservation Issues

Richard Davis, ULCC  
JISC-PoWR Workshop 3  
Manchester, 12/9/2008

# What's on your web?

- Current information about institution
- Outputs of activities:
  - Administrative
  - Research
  - Teaching
  - Projects
- Library and information resources (catalogues and full text, e.g. IRs)
- Teaching and study resources (usually in VLE)
- Assessment/examination systems
- Intranet systems: accounts, staff and students
- Blogs
- Wikis

# Are they only on the web?

- Resources created directly through web interface (CMS, blog, wiki) where the web representation is the only significant presentation of it, and usually the only ready way to access it
- Resources that exist elsewhere and the web delivers one view of it.
- Interactive web resources, from course-booking to blog-commenting.

# Things we need to know

- Who owns it?
- What is it for?
- Where is it?

# Some issues: General

- The **sheer quantity and variety** of resources on the web potentially needing preservation.
- The **frequency of change**, because of the ease with which web sites and pages can be updated
- The **scale of change possible *at a stroke***, for example in an institution-wide website redesign

# Some issues: Technological

- Shifting resources: changing URLs within a site
- Vanishing domains and subdomains
- Database-driven and "deep" websites
- Streaming and multimedia resources
- Third-party hosting
- Personalisation
- How to provide access to "archived" resources?

# Some issues: Organisational

- Ownership and responsibility for web resources
- Ensuring integrity and quality of resources
- Selecting resources for preservation
- Resourcing preservation activities

# Some issues: Content Management Systems (CMS)

- Editing: centralised or devolved?
- Version control and change logging?
- Rollback/reversion?
- Link format
- Application lifespan: are there migration/export options?



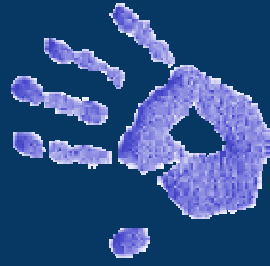
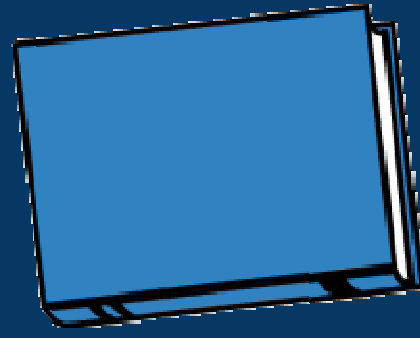
# Some issues: Web 2.0

1. Third-party services
2. Collaborative and social
3. Aggregation and personalisation
4. Google

# Is that it?

Please continue help us identify and fill in the gaps...

*Advice on how to approach these issues follows after the break.*



JISC